



**Total solution provider, supplying  
Aluminium & Zinc High Pressure Diecastings**



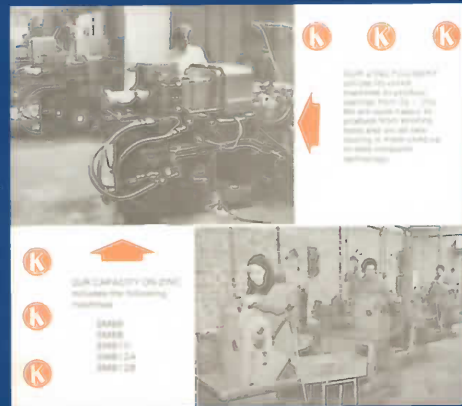
***EVERY TIME***

# History

Charles Kempster and William Lowe founded Kemlows Diecasting Products Ltd. in 1946 with the intention to produce diecast miniature toys from premises in London.

After two major expansions in 1974 they commissioned and constructed a purpose built factory in Hoddesdon, Hertfordshire where the company is based today. In 1994 Kemlows adopted strategic business planning which necessitated major capital investment leading to the present owner purchasing the company as a management buy out in 2001.

Since that time the ongoing efficiency through continuous improvements and capital investment has moved the focus of manufacture into larger casting projects to complement the existing aluminium and zinc work.



# Latest Technology

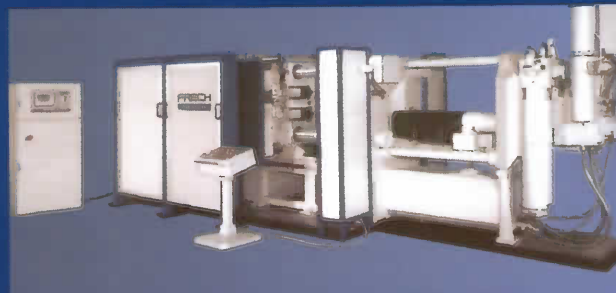


Kemlows has a proud record of investment leading to automated robotics controlled casting cells.

To compliment this, vacuum casting technology along with thermal control units at each cell ensures the highest quality of casting is reproduced each and every time. The finishing requirement of the customer is met specifically time after time with CNC machining complimenting traditional finishing equipment.



At the design stage of development, CAD stations allow complete visualisation of customer designs enabling a clear introduction to FMEA and APQP options. This clarity of detail ensures "Right First Time" die development and substantial reduction of product and process lead times.



# Quality Systems



ISO 9001 and QS 9000 are the foundations of management's philosophy around which the Kemlows team conducts quality planning and control. At each stage of the manufacturing cycle, under the umbrella of this accreditation, Kemlows pursue quality. In line with continuous improvements we will update our quality systems to the latest requirements and standards.

From the design stage of the process, APQP systems are utilised to eliminate potential production difficulties. Using 3 axis programmable co-ordinate measuring equipment, components are measured and statistically logged for analysis and quality improvement action.

From incoming materials to finished goods delivered to the customer's location, Kemlows' plans, implements, documents, reviews and refines, to ensure our reputation of reliable first class product, supported by world class service, is delivered and maintained.

“ **We will achieve Diecasting industry Excellence and customer Acclaim, through our commitment to Quality, via the Skills of our people.** ”

## Kemlows Engineering in Quality

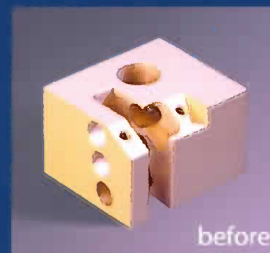
The ability to diecast both Aluminium and Zinc alloys on hot and cold chamber machines from a few grams, to many kilograms on machines ranging from 25 tonne to 640 tonne, enables Kemlows to provide the complete value engineering casting solution to its customers.

New products are fully analysed by the FMEA team at Kemlows to smooth the development from design concept through to trouble free production. Our diecasting experience enables an early awareness of any "problem" design features and we eliminate them from the production process. Split lines, draw taper, tolerance control, etc. are all carefully thought through to maximise ease of production, ensuring consistent on time delivery.

This early intervention ensures the target of zero defects is an achievable goal and emphasises our commitment to servicing our customer from concept to completion. Support for our customer's product improvement doesn't stop at the design stage, it continues throughout manufacture with continuous improvement a reality not a slogan. *See example to the right.*

We are no strangers to awards, and actively pursue the accolades of success. Over the past years Kemlows have won PEP Energy Efficiency awards at both regional and national level for plant and efficiency thus playing our part in reducing carbon dioxide emissions. Business planning has been recognised and rewarded via Business link/Shell UK/dti National winners under "Making a Difference" for "Outstanding business development".

Our components have won awards with our trade body the CMF and the Diecasting Society.



# Casting Finishes



Our components are used in many and varied fields from medical to military, from domestic to automotive. With such diversity we are asked to apply as many and varied colours and coatings as we have customers.

This list includes protective, decorative, abrasive, insulative, conductive; an endless array of finishes can be met by Kemlows without difficulties.

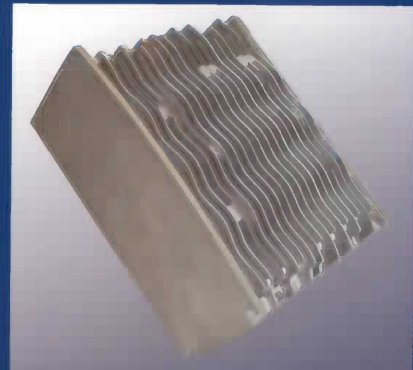


“ **If surface finish is a key element of your product talk to us we will always find a solution.** ”

# Production Control

Control of production from order intake to delivery is a key part of Kemlows success. Our production control department ensures both electronic and personal customer contact exists, to deliver the finished product on time.

Using our advanced scheduling system enables us to offer credible forecasts of production and delivery to meet our customers specific requirements.

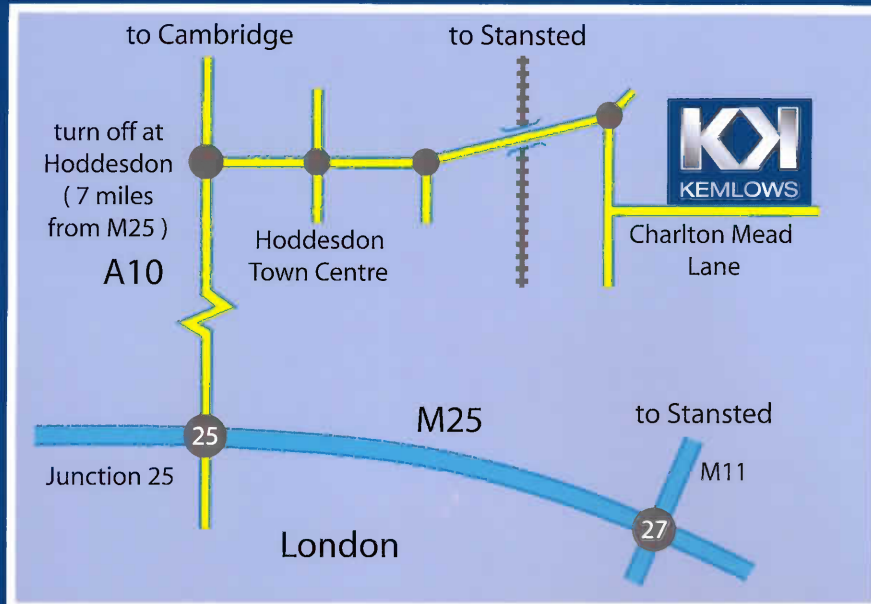


Special packaging, bar coding, or diverse delivery destinations are not unusual issues for Kemlows. We deliver to all parts of Europe, North America, Asia and China as well as the UK.

All forms of E-scheduling are available along with hard copy systems, consequently, we are able to accommodate what ever scheduling system our customer utilises.

“ **World Class is our standard.** ”

## How to find us



Kemlows Diecasting Products Ltd  
Charlton Mead Lane, Hoddesdon  
Hertfordshire EN11 0HB

Tel: + 44 (0) 1992 460 671

Fax: + 44 (0) 1992 446 889

email: [sales@kemlows.co.uk](mailto:sales@kemlows.co.uk)

web: [www.kemlows.co.uk](http://www.kemlows.co.uk)

Registration No. 132742

“ **World Class is our standard.** ”

